



CB Electronics

PD-1

Programming Guide

Version 1.0





CB Electronics

CB Electronics has made every effort to ensure the accuracy of information contained within this document, which is nevertheless supplied for information purposes only and does not constitute any form of warranty or guarantee.

All trademarks acknowledged.

The information in this document is subject to change without notice.

CB Electronics
Loddonside, Lands End House
Beggars Hill Road
Charvil
Berkshire RG10 0UD
Tel: +44 (0)118 9320345
Fax: +44 (0)118 9320346
Email: support@colinbroad.com
Tech Support: +44 (0)118 9320345
Web: www.colinbroad.com



Contents

CB ELECTRONICS	2
CONTENTS	3
FIRMWARE UPDATES	1
PROGRAMMING CONNECTION	1
PROGRAMMING PROCEDURE	2
PD-1 RECOVERY	5
PD-1 V2 SOFTWARE KEY REQUEST AND INSTALLATION	ERROR!
BOOKMARK NOT DEFINED.	

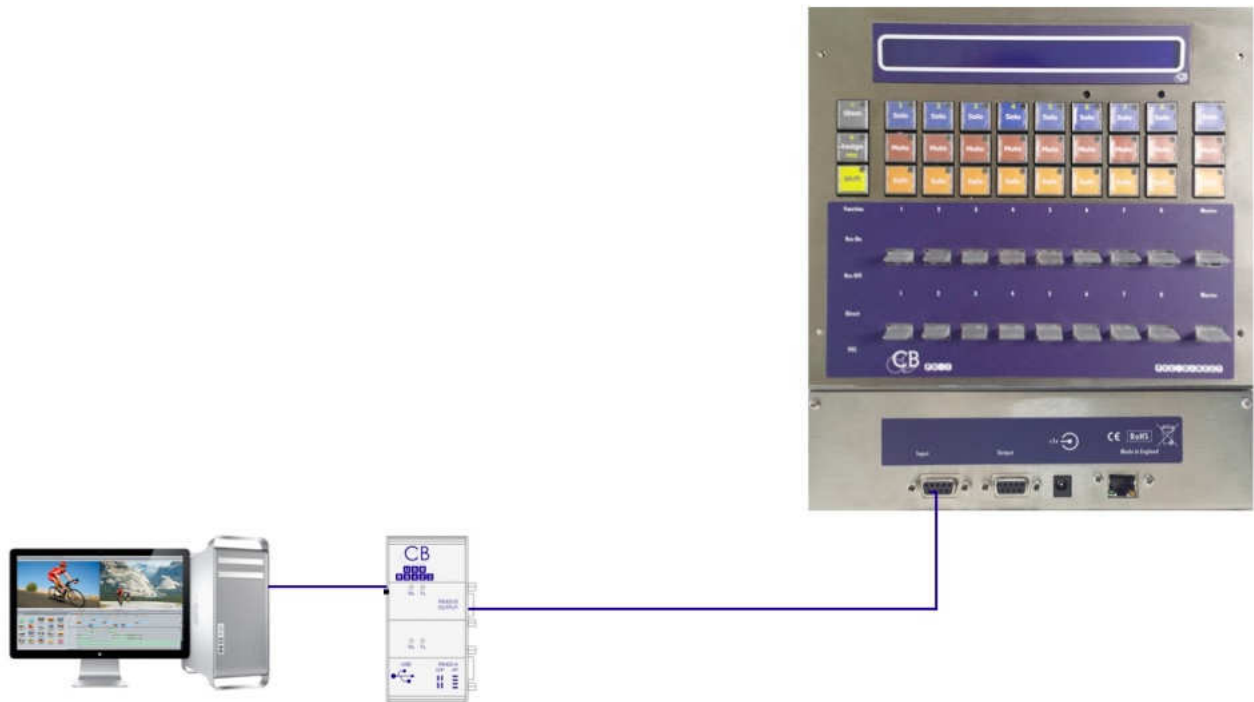
Firmware Updates

Connect the USB-422 (supplied with the PD-1) output port to the PD-1 input port as show in the diagram below. RS422 Input port is used to update the PD-1. You may need a driver for the USB-422 if you are using a different computer. Firmware updates are posted on the appropriate product page:

PD-1- - <http://www.colinbroad.com/cbsoft/pd1/pd1.html>

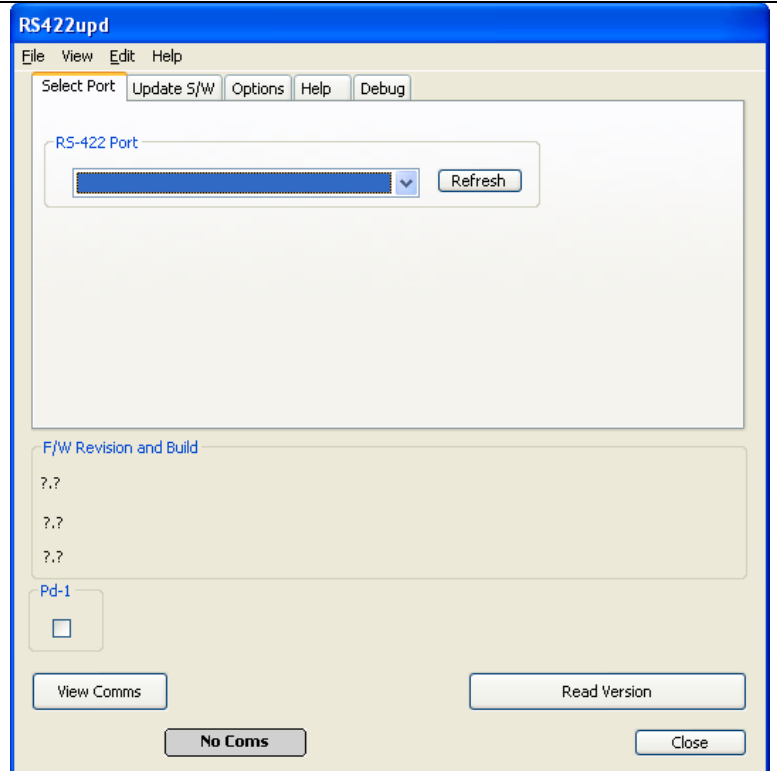
There are two different programming algorithms depending on the PD-1 core software. The instructions below describe how to discover the version and setup correctly. You will find both a Mac and Windows version of "RS422upd on the same page.

Programming Connection

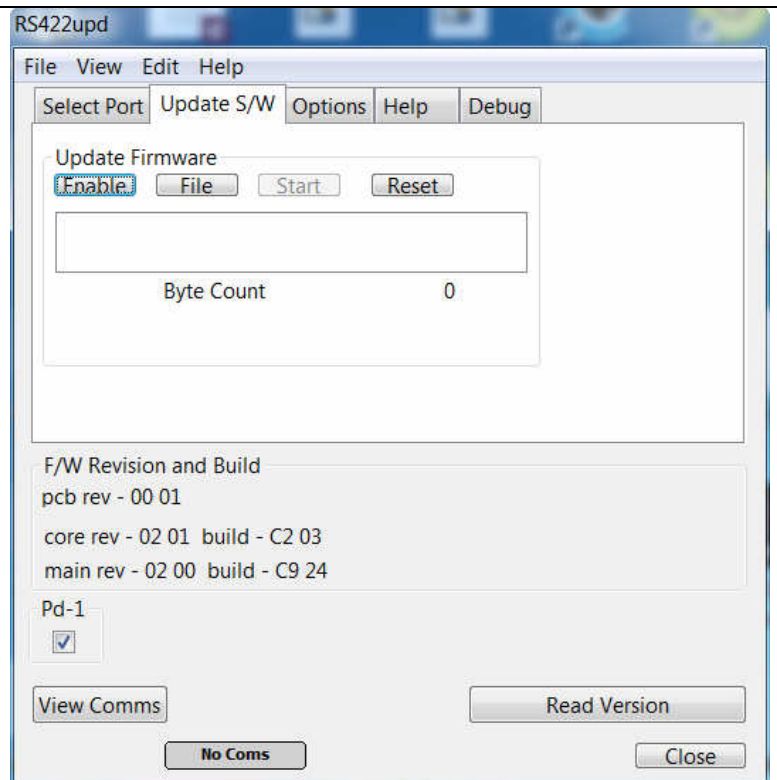


Programming Procedure

Opening Screen showing select RS422 port. After reading the Version. Note the Green Good Com s indicator.



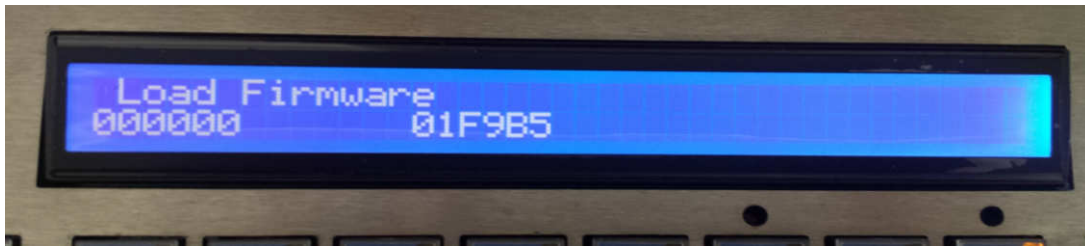
Click on enable to discover the correct programming algorithm. Look at the PD-1 Display to check if the box should be ticked or Not



Pd-1



New PD-1 in programming mode, the PD-1Box NOT ticked



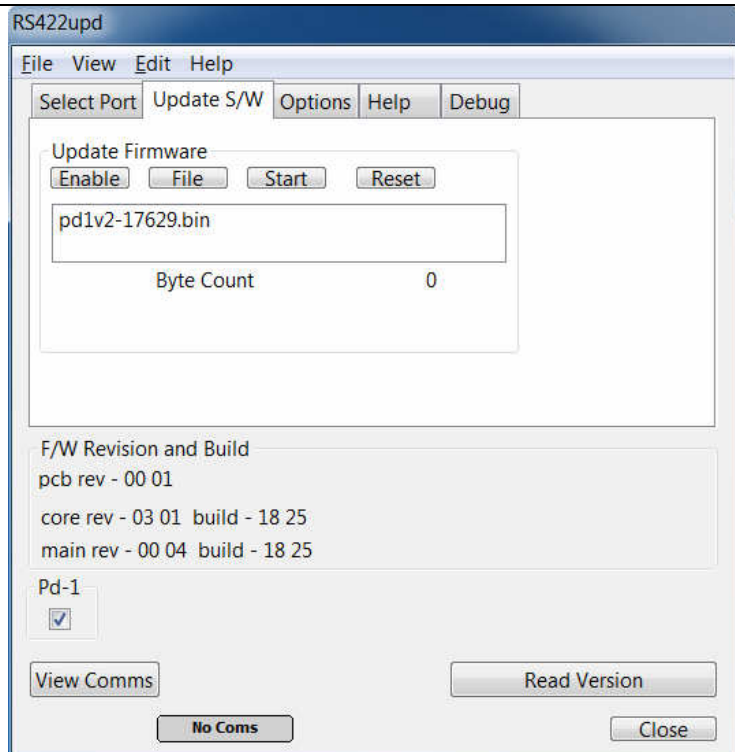
Pd-1



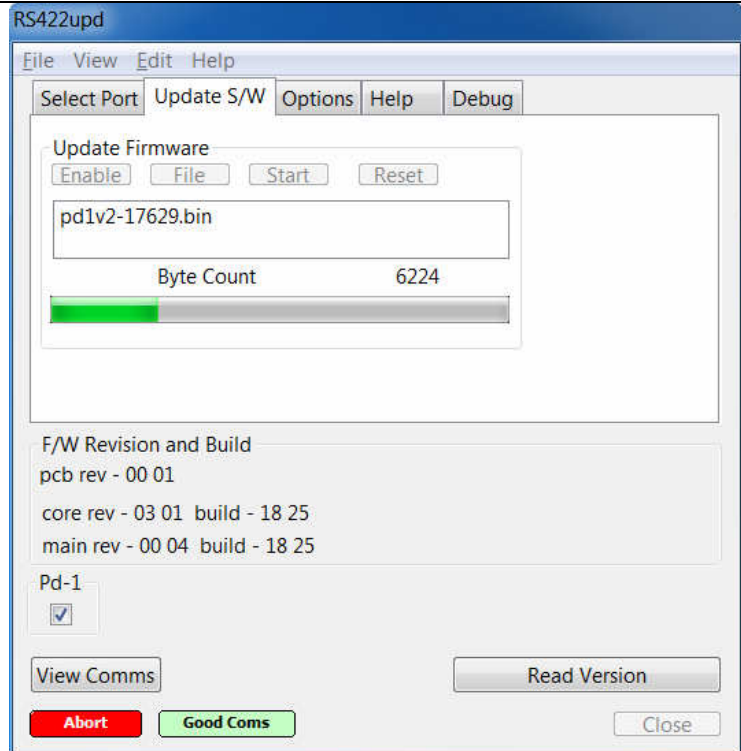
Original PD-1 in programming mode, PD-1 box must be ticked!!



Programming Screen after enable and file selection. The firmware files can be posted as a zip file, if they are extract the .bin file before use.

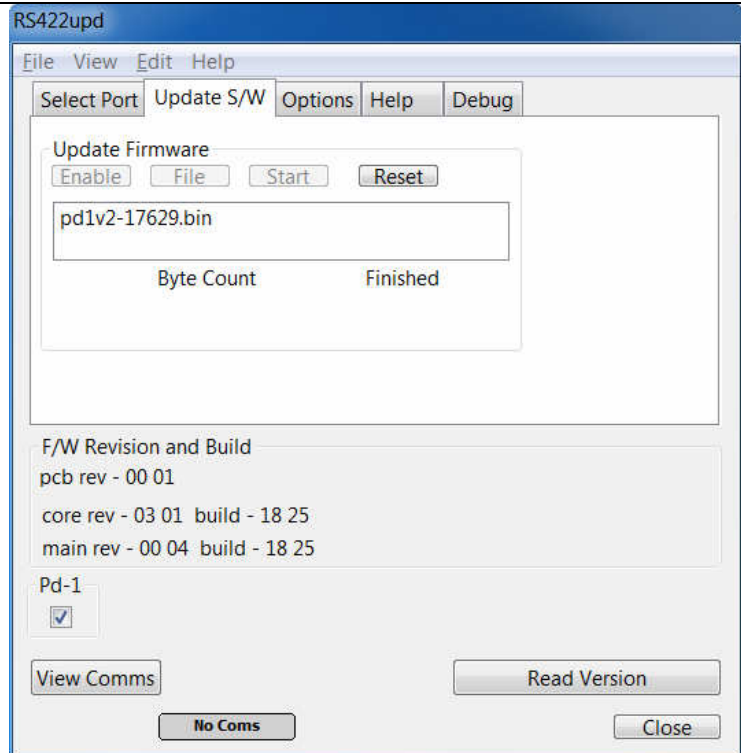


Click Start, the progress bar will run and the byte count on both the PD-1 and RS422upd will increment



The screenshot shows the RS422upd application window. The 'Update Firmware' section has 'Enable' checked, 'File' set to 'pd1v2-17629.bin', and 'Byte Count' at 6224. A green progress bar is partially filled. The 'F/W Revision and Build' section shows: pcb rev - 00 01, core rev - 03 01 build - 18 25, and main rev - 00 04 build - 18 25. The 'Pd-1' checkbox is checked. At the bottom, there are buttons for 'View Comms', 'Read Version', 'Abort', 'Good Coms', and 'Close'.

When Finished Click on reset to restart the PD-1, if you program with the wrong software or have a problem you can use the recovery mode as described below.



The screenshot shows the RS422upd application window after the update is complete. The 'Update Firmware' section has 'Enable' checked, 'File' set to 'pd1v2-17629.bin', and 'Byte Count' at 'Finished'. The 'F/W Revision and Build' section shows the same revision information. The 'Pd-1' checkbox is checked. At the bottom, there are buttons for 'View Comms', 'Read Version', 'No Coms', and 'Close'.

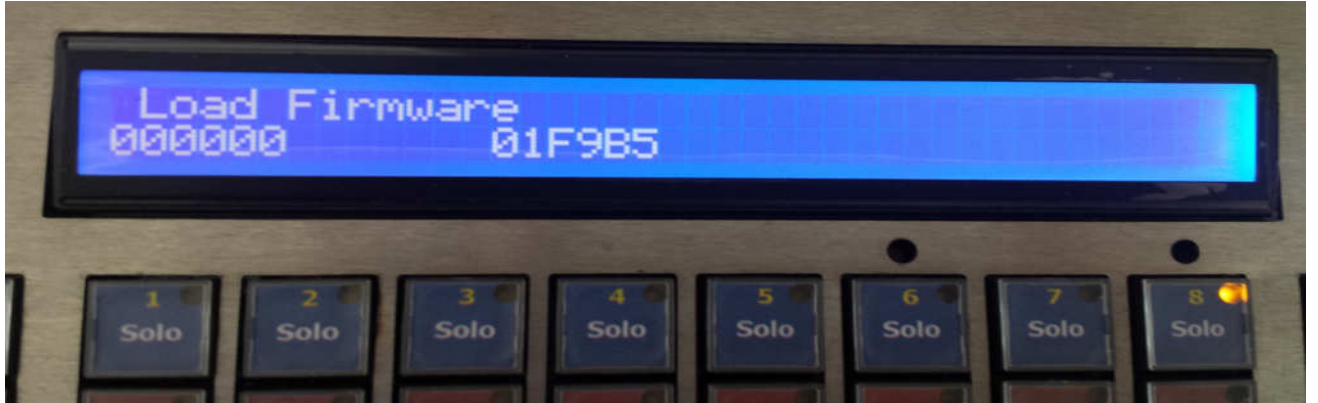
PD-1 Recovery

In the case of power failure or other problems when updating the PD-1 firmware.

1. Abort and exit from "RD422upd"
2. Disconnect the Power then reconnect whilst depressing [Stem] and [Assign]. The Software Download screen will be displayed as below.
3. Restart "RD422upd". You may need to re-select the correct port.
4. Check the display to see if the PD-1 box should be ticked


Pd-1
☐

New PD-1 in programming mode, the PD-1Box NOT ticked



Pd-1
☒

Old PD-1 in programming mode, PD-1 box must be ticked!



5. Program the PD-1 as normal